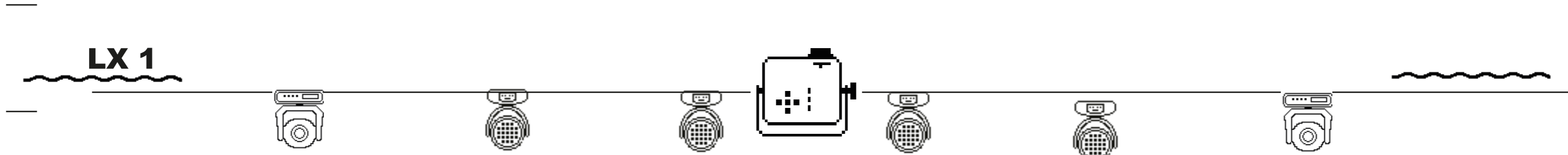
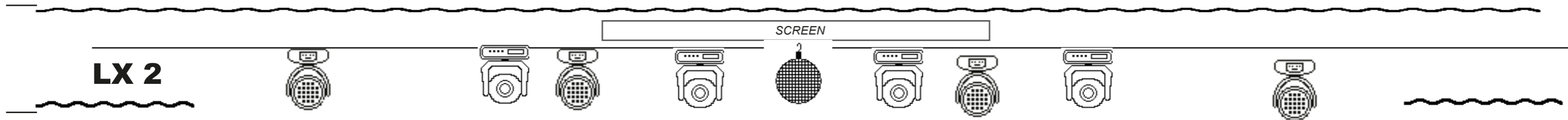
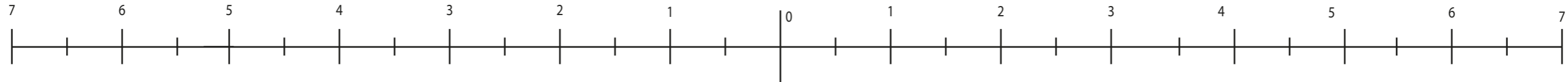
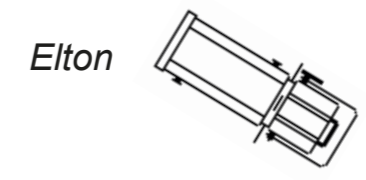
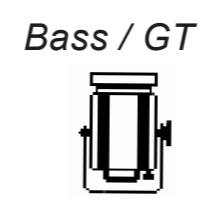
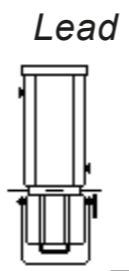
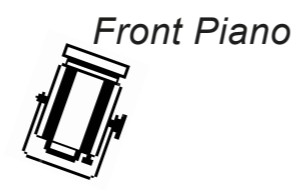
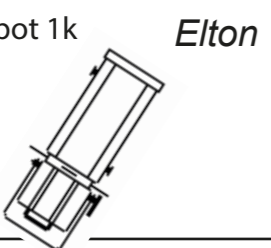


Light Plot Eltonology Top View (Hanging trusses)

Contact
Thibaud Killin
thibaud.killin@gmail.com
Tel : +33 6 26 65 56 91



- List
- 3 Leeko 2k
 - 4 Fesnel Spot 2k
 - 3 Fesnel Spot 1k
 - 4 Blinders FL1300

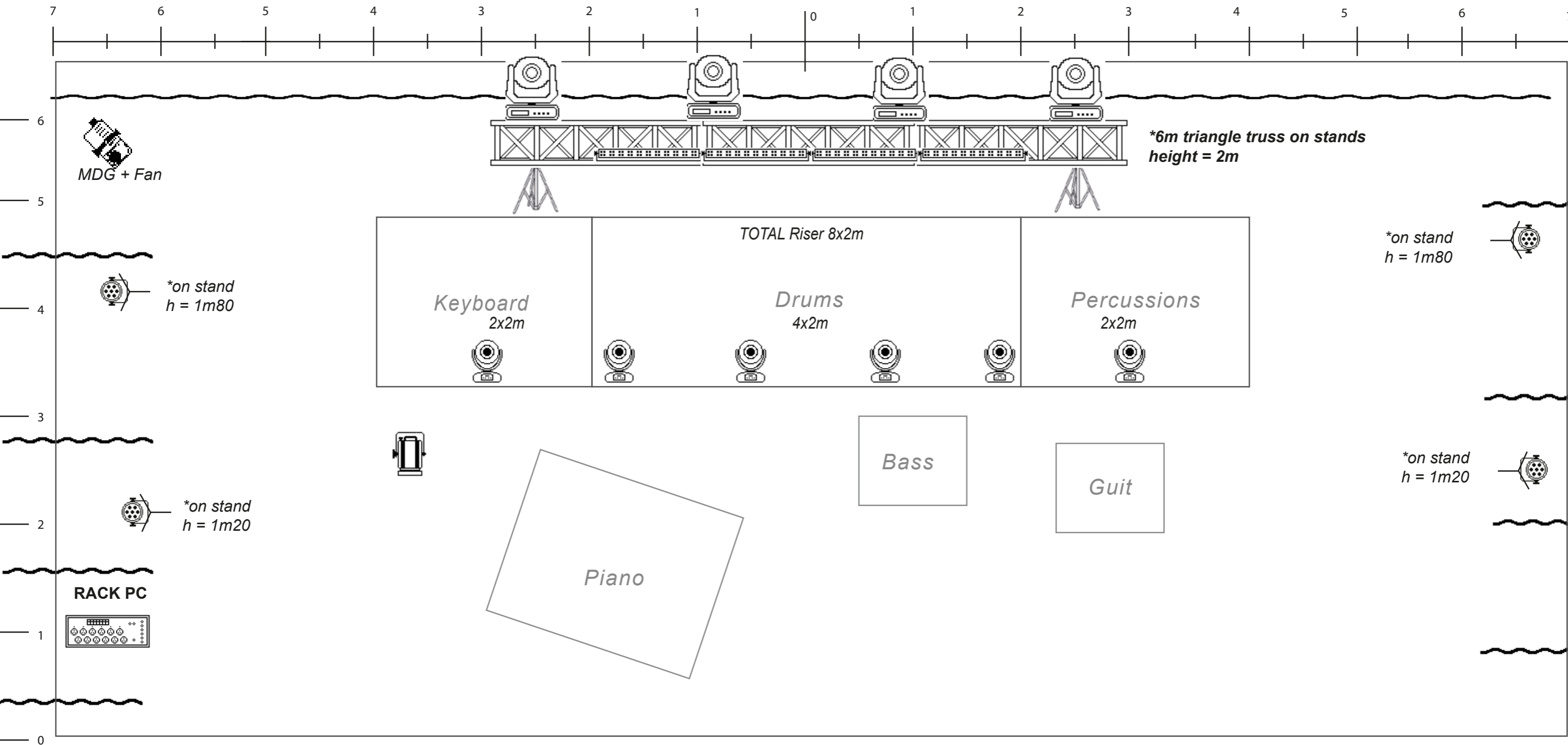



- List
- 6 Martin Quantum Profile Extended 27ch Mode
 - 8 Martin Mac Aura Standard 17ch mode
 - 1 Videoprojector 10 000 lumens minimum

FRONT TRUSS


LightPlot Eltonology Top View (Ground)

Contact
Thibaud Killin
thibaud.killin@gmail.com
Tel : +33 6 26 65 56 91



4  Martin Quantum Profile Extended 27ch Mode

6  Clay Paky Sharpy Standard 16ch mode

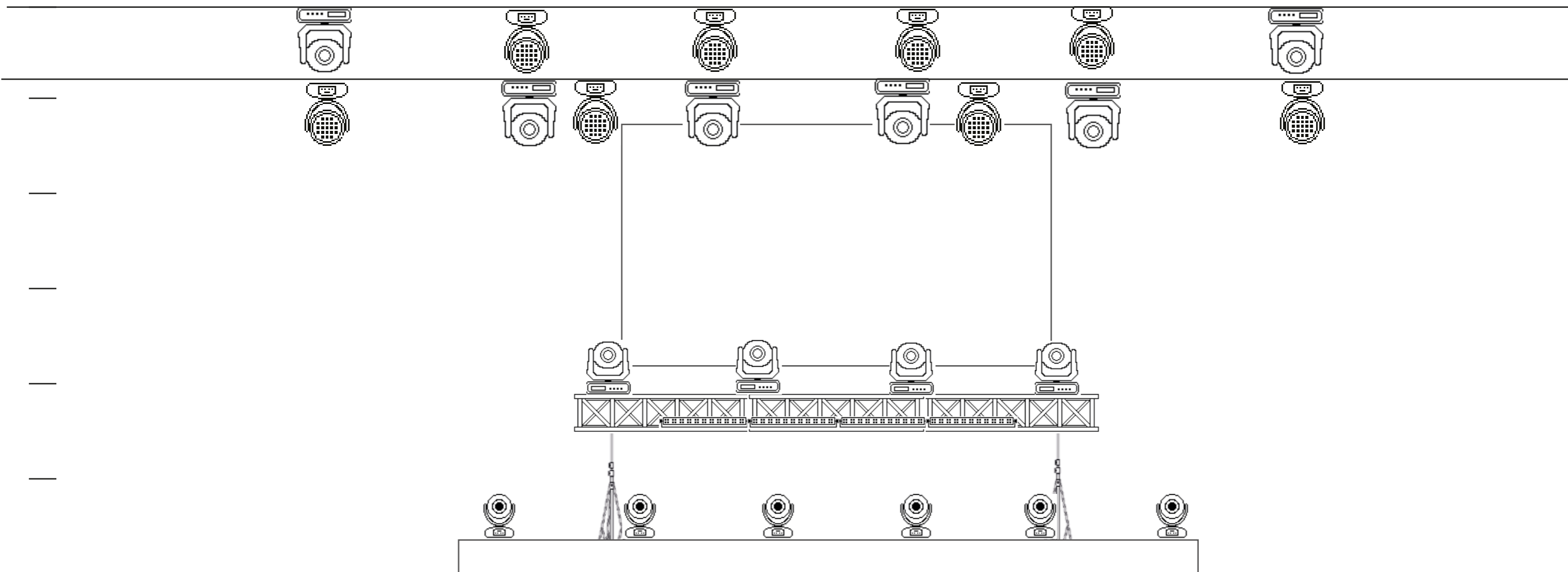
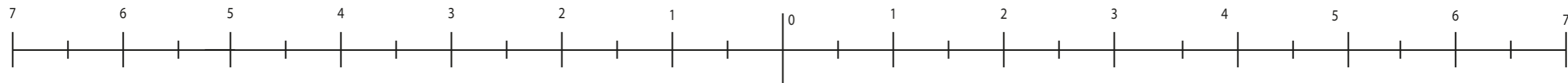
4  Martin RUSH RGBW Zoom 9ch mode

4  GLP X4 Bar 20 SPiXH 89 ch mode

1  Fresnel spot 1K on baseplate

Light Plot
Eltonology
Front View

Contact
Thibaud Killin
thibaud.killin@gmail.com
Tel : +33 6 26 65 56 91



Light Plot Eltonology Informations

Contact
Thibaud Killin
thibaud.killin@gmail.com
Tel : +33 6 26 65 56 91

To be provided by the venue

- 1 Light Technician / Electrician
- 1 Rigger

Console : GrandMA2 Light version : 3.9.60.28
13 Dimmer channels 3kW
(7 on front truss, 5 on hanging trusses, 1 on ground)
6 Direct Power circuits 16A (3 on trusses, 3 on ground)
2 RJ45 Cat 5E minimum from stage right to FOH
1 Haze Machine MDG ATMe + Ventilo

Fixture List

Moving Heads

- 10 Martin Quantum Spot
- 8 Martin Mac Aura
- 6 Clay Paky Sharpy
- 4 GLP X4 Bar 20
- 4 Martin PAR LED Rush RGBW Zoom

Traditionnal - Dimmers

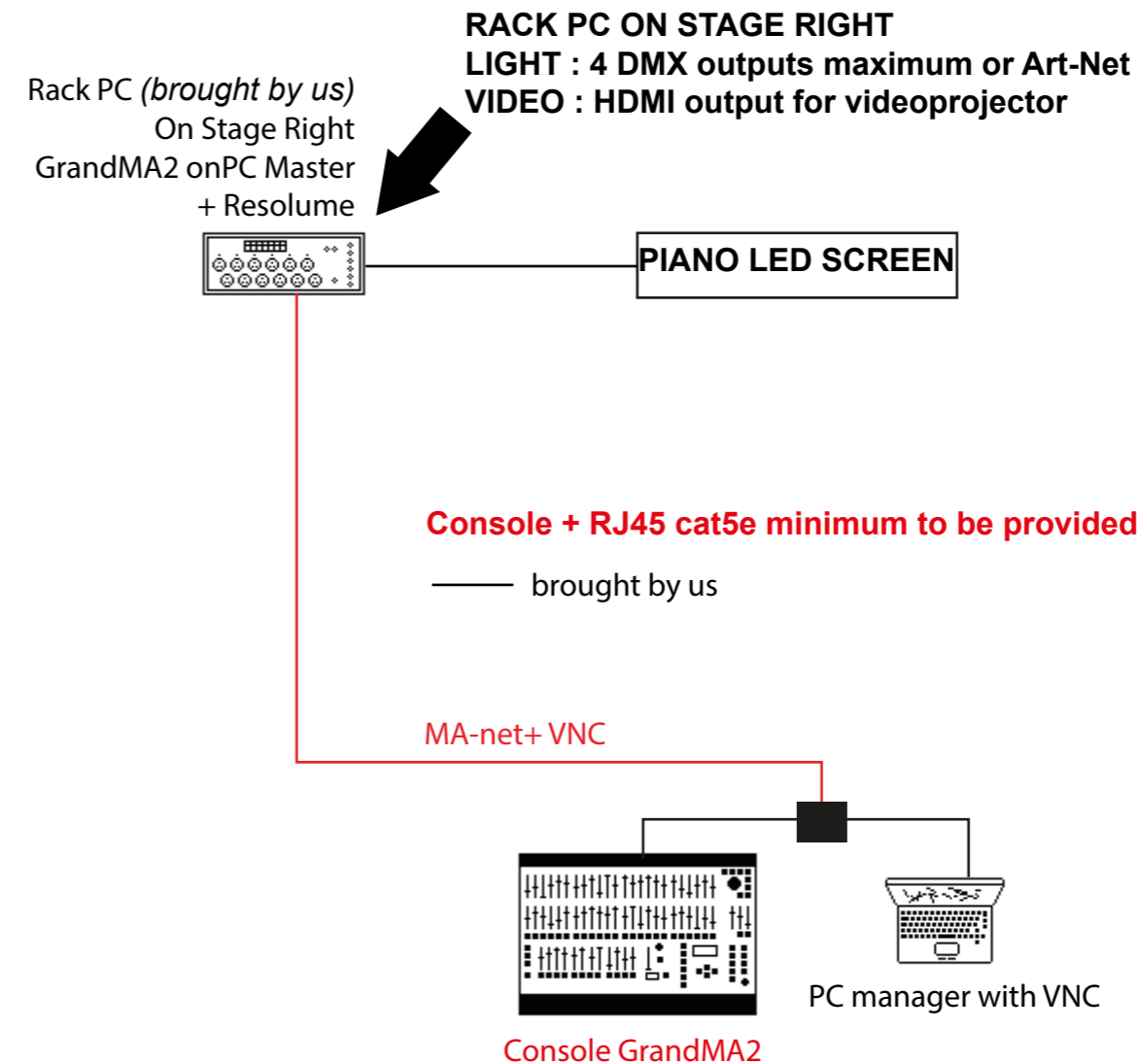
- 3 Leeko 2kW
- 4 Fresnel Spot 1kW
- 4 Fresnel Spot 2kW
- 4 Blinder FL1300

- 1 motorised Disco Ball (*brought by us*)

Accessories list

- 4 stands (h=2m)
- 6m black triangle truss
- 3 stands with T top (h=2m)
- 1 baseplate

SETUP PLAN



Video

- 1 projection screen minimum 4x2,5m
- 1 videoprojector 10 000 lumens

*If the show is outside, thanks to provide
an LED screen of the same size*